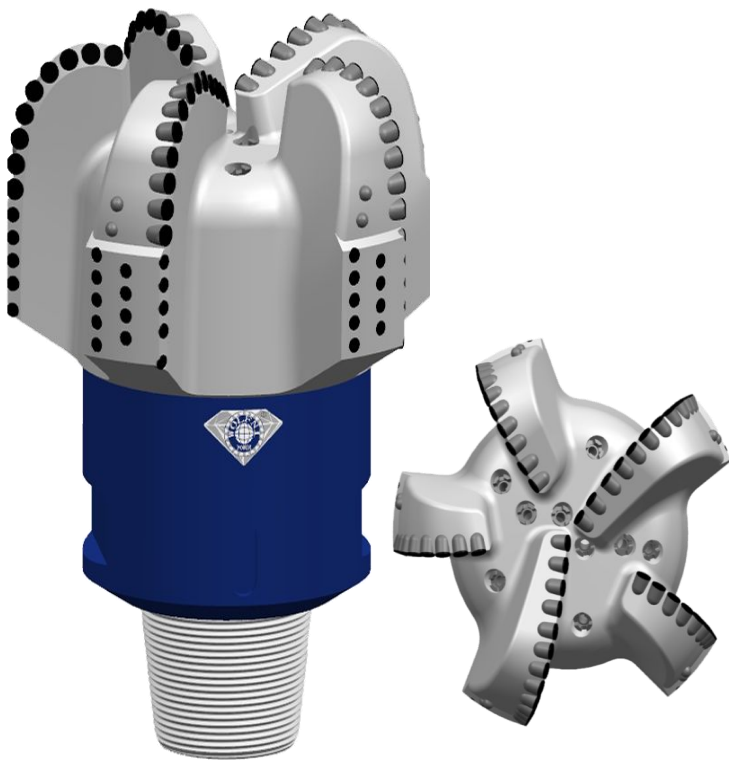




Specs:17 1/2" WS519VR(444.5mm)

IADC:S323

ID:WFN445S19503A



Design character:

■ These back redressings at the base of gauge avoid difficult of pulling PDC bits out of hole in unconsolidated formation, and trim wall of well.

■ Placement of stability cutters let PDC bits have good stability in drilling in abrasive formation, have longer life time. Then cost of drilling will be lower accordingly.

■ Straight blade and short gauge: When pumping pressure is low abrasive drilling mud can be discharged quickly to avoid bit balling and losing efficacy of bit.

■ Suit for well drilling in low compressive strength, even texture soft-medium rock formation. Such as wake shale, density marlstone, strong batt, wake sandstone, limestone, and soft gravel, etc.

Specialized for soft /medium/ hard formation oil/gas well,show us excellent drilling speed &life-span of using .

Specifications:

Blade Qty	5
Total Cutters	79
Primary Cutter Size	19.05mm
Assistant Cutter Size	Non
Gauge Cutter Size	13.44mm
anti-quake ball size	13.44mm
Nozzle Qty.	9
Crown length	277mm
Gauge length	96.5mm
Connetion Size	7 5/8REG
Make-up Torque	46.1—54.2kN·m
Assembly groove wID:th	260mm
Bit Weight	267.4kg

Operating Parameters:

Rotary speed	60-200RPM
Flow rate	70-90L/S
Weigh on bit	40-200KN