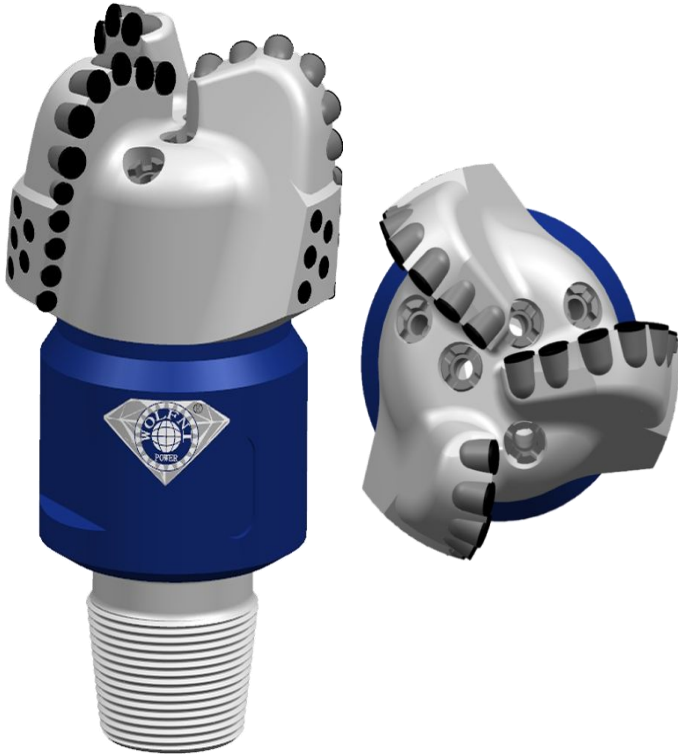




Specs:8 1/2" WS319SG(215.9mm)

IADC:S223

ID:WFN216S19301A



Design character:

- Spiral blades increase contact area between PDC bit and well wall to keep drilling stably, to prolong lifespan of PDC bits.
- These back redressings at the base of gauge avoid difficult of pulling PDC bits out of hole in unconsolidated formation, and trim wall of well.
- Adopting CFD emulational technology to calculate to optimize PDC bit, then reduce possibility of heavy breaking and wearing of bit.
- Suit for well drilling in low compressive strength, high drillability soft rock formation. Such as soft limestone, chalk, halite, gypsum, anthracite, broken sandstone, and rocky soil, etc.

Special for soft/medium formation oil/gas/mining well design, high speed drilling.

Specifications:

Blade Qty	3
Total Cutters	30
Primary Cutter Size	19.05mm
Assistant Cutter Size	Non
Gauge Cutter Size	13.44mm
anti-quake ball size	Non
Nozzle Qty.	5
Crown length	155.8mm
Gauge length	62.9mm
Connetion Size	4 1/2REG
Make-up Torque	16.3—21.7kN·m
Assembly groove wID:th	145mm
Bit Weight	45.5kg

Operating Parameters:

Rotary speed	60-260RPM
Flow rate	28-40L/S
Weigh on bit	20-100KN