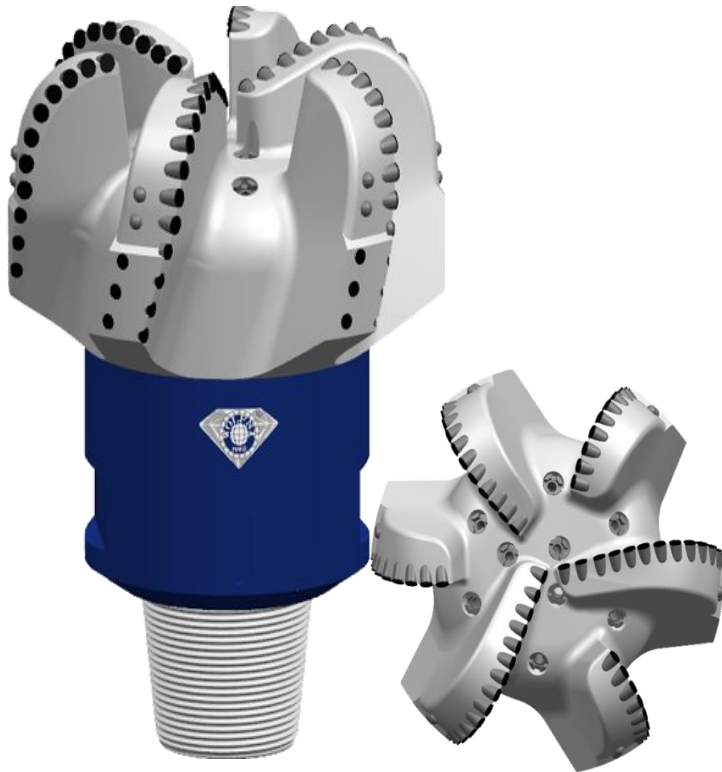




**Specs:17 1/2" WS616GSV(444.5mm)**

**IADC:S423**

**ID:WFN445S16601C**



#### **Design character:**

■ These back redressings at the base of gauge avoid difficult of pulling PDC bits out of hole in unconsolidated formation, and trim wall of well.

■ Spiral blades increase contact area between PDC bit and well wall to keep drilling stably, to prolong lifespan of PDC bits.

■ Placement of stability cutters let PDC bits have good stability in drilling in abrasive formation, have longer life time. Then cost of drilling will be lower accordingly.

■ Suit for well drilling in low compressive strength, even texture medium rock formation. Such as wake shale, density marlstone, strong batt, wake sandstone, limestone, and soft gravel, etc.

Specialized for soft /medium/ hard formation oil/gas well,show us excellent drilling speed &life-span of using .

### **Specifications:**

Blade Qty	6
Total Cutters	86
Primary Cutter Size	15.88mm
Assistant Cutter Size	Non
Gauge Cutter Size	13.44mm
anti-quake ball size	13.44mm
Nozzle Qty.	9
Crown length	244.4mm
Gauge length	77.3mm
Connetion Size	7 5/8REG
Make-up Torque	46.1—54.2kN·m
Assembly groove wID:th	260mm
Bit Weight	209.6kg

### **Operating Parameters:**

Rotary speed	60-200RPM
Flow rate	70-90L/S
Weigh on bit	40-200KN