



Specs:8 1/2" WS419VR(215.9mm)

IADC:M322

ID:WFN216S19402D

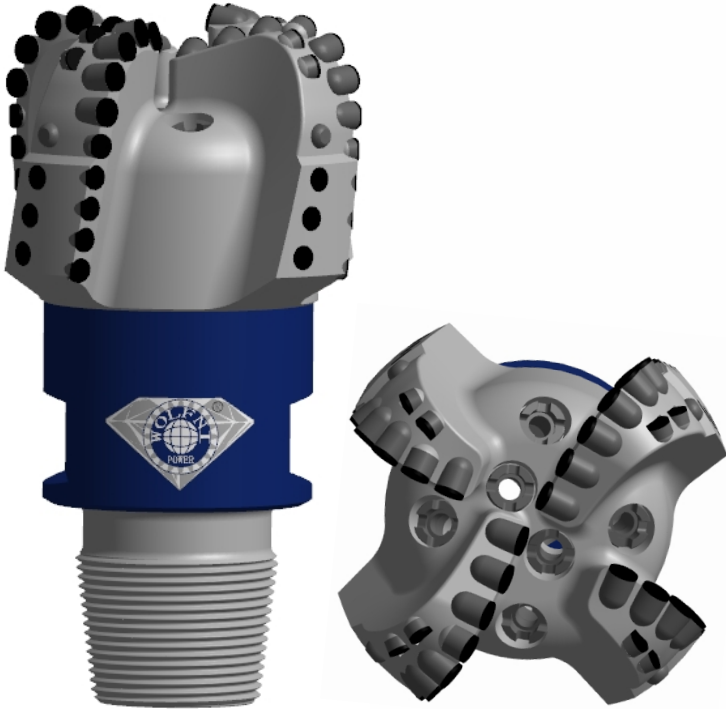
Design character:

■ Placement of stability cutters let PDC bits have good stability in drilling in abrasive formation, have longer life time. Then cost of drilling will be lower accordingly.

■ These back redressings at the base of gauge avoid difficult of pulling PDC bits out of hole in unconsolidated formation, and trim wall of well.

■ straight blade and short gauge: When pumping pressure is low abrasive drilling mud can be discharged quickly to avoid bit balling and losing efficacy of bit.

■ Suit for well drilling in low compressive strength, even texture soft-medium rock formation. Such as wake shale, density marlstone, strong batt, wake sandstone, limestone, and soft gravel, etc.



Specialized for oil/gas well design ,high speed drilling & long life-span using

Specifications:

Blade Qty	4
Total Cutters	61
Primary Cutter Size	15.88mm
Assistant Cutter Size	Non
Gauge Cutter Size	13.44mm
anti-quake ball size	13.44mm
Nozzle Qty.	6
Crown length	153.3mm
Gauge length	70.1mm
Connetion Size	4 1/2REG
Make-up Torque	16.63-23.71kN.m
Assembly groove wID:th	145mm
Bit Weight	75kg

Operating Parameters:

Rotary speed	60-260RPM
Flow rate	28-40L/S
Weigh on bit	20-100KN