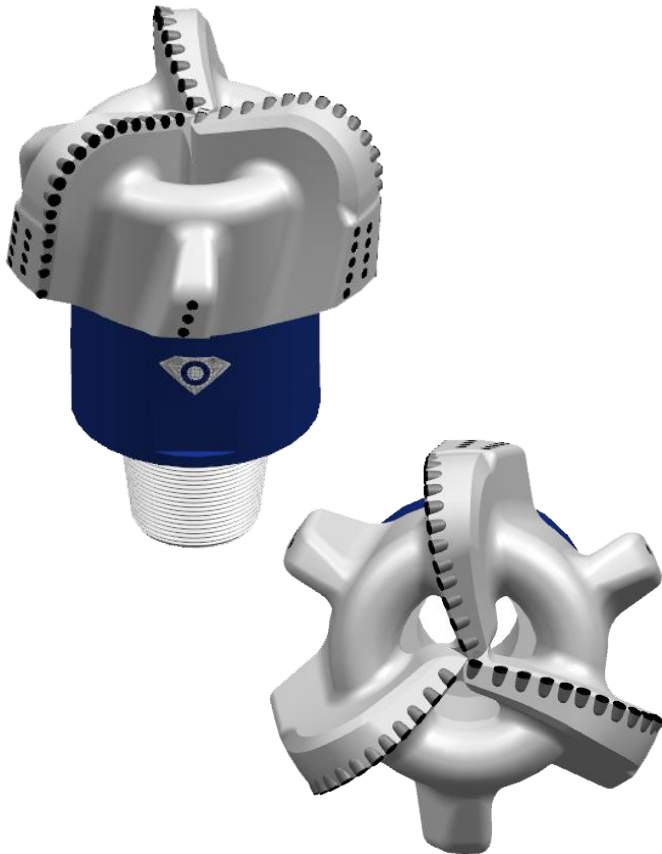




**Specs: 17 1/2" WSCSR316-A(444.5mm) IADC:S223 ID:WFNCSR445S16301A**



**Design character:**

■ Special design of back-rake angles will decrease torque on bit, increase bit aggressiveness, improve efficiency of ROP.

■ Adopting CFD emulational technology to calculate to optimize PDC bit, then reduce possibility of heavy breaking and wearing of bit.

■ Special gauge design has more cutters placed on gauge to prolong life time of PDC bit in high abrasive formation, to avoid diameter shrinkage for gauge wearing.

■ Suit for well drilling in low compressive strength, even texture soft-medium rock formation. Such as wake shale, density marlstone, strong batt, wake sandstone, limestone, and soft gravel, etc.

Specialized in Soft-hard formation for water well, Excellent drilling speed & long life-span using

**Specifications:**

Blade Qty	3
Total Cutters	34
Primary Cutter Size	15.88mm
Assistant Cutter Size	Non
Gauge Cutter Size	13.44mm or PDC block
anti-quake ball size	Non
Sucking nozzle Qty.	3
Sucking nozzle area	11200mm <sup>2</sup>
Crown length	200mm
Gauge length	124mm
Connetion Size	7 5/8REG
Make-up Torque	16.63-23.7kN.m
Assembly groove wID:th	265mm
Bit Weight	≈230kg

**Operating Parameters:**

Rotary speed	60-200RPM
Bit Weight on bit	40-200KN